

Since 1958

Every drop of water counts

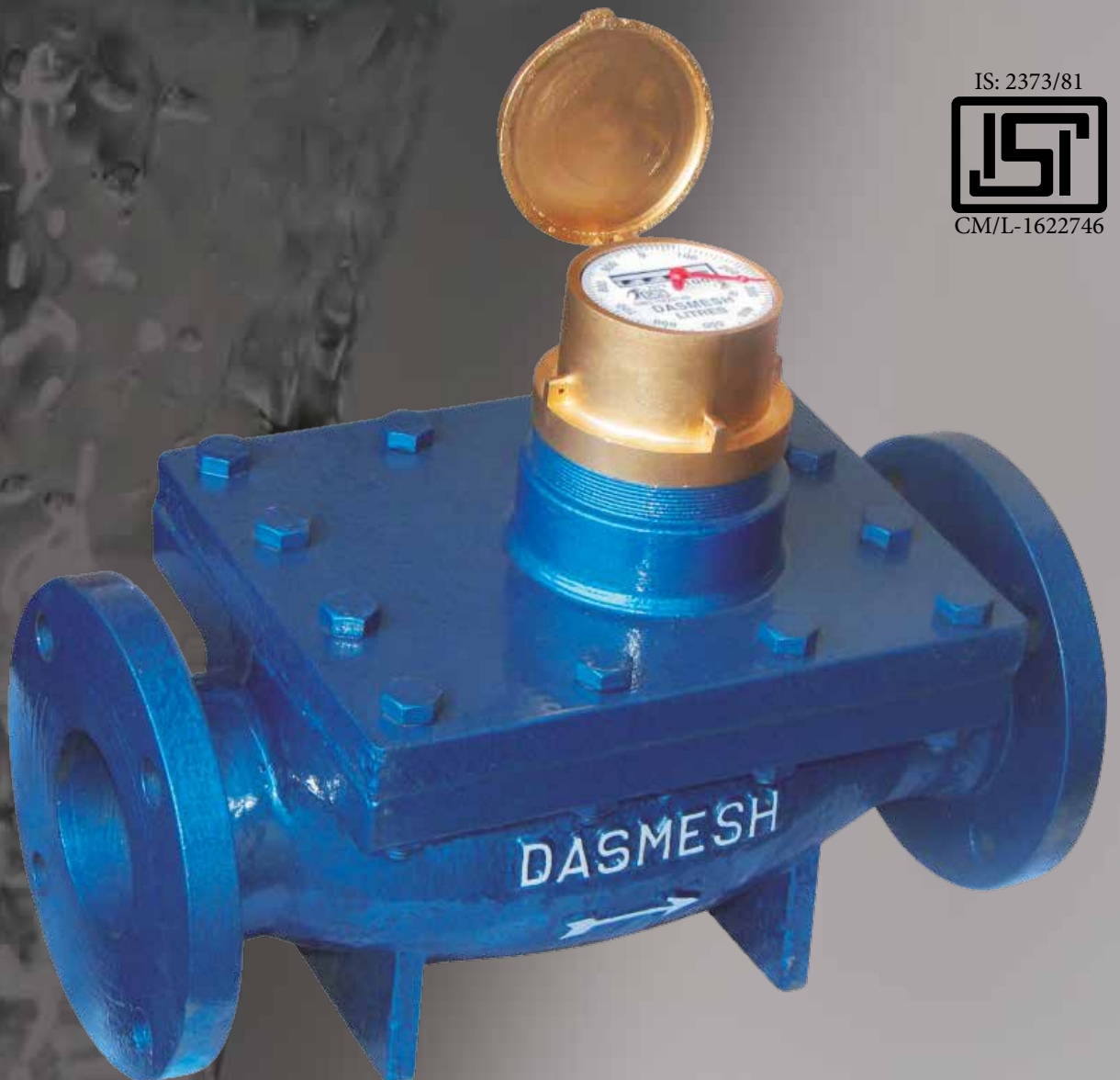
Dasmesh®

Interchangeable Type
Removable Mechanism

Water Meter

Mechanical Driven

Model : DITRM



IS: 2373/81



CM/L-1622746

Dasmesh®

WATER METER



SALIENT FEATURES

- Dry dial mechanical driven flange ends
- Interchangeable spare parts without interrupting water supply
- Ensures wiper to keep the dial free from frost for clear reading
 - Metallic gears for long life and durability
 - Size range from 40mm to 700mm

PERFORMANCE DATA

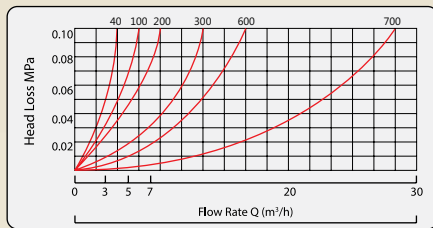
Size of Meter		Max. recording Cap in Ltrs. Millions	Min. Reading Qty in ltrs	Hydrostatic Test	Nominal Cap of water meters discharge Ltrs./hrs. at 3 m loss of head	Intermidate Cap of Water Meter discharge Ltrs./hrs. at 1m loss of head	Metering Accuracy	Minimum starting flow Lt./hr.	Permissible Loading Ltrs./ day (8 hours)
mm	inches								
40	1½	100	10	1.6 Mpa	50000	20000	± 2%	500	200000
50	2	100	10	1.6 Mpa	50000	20000	± 2%	500	200000
65	2½	100	10	1.6 Mpa	125000	62000	± 2%	1000	620000
80	3	100	10	1.6 Mpa	125000	62000	± 2%	1000	620000
100	4	1000	100	1.6 Mpa	200000	100000	± 2%	1500	1000000
150	6	1000	100	1.6 Mpa	500000	250000	± 2%	3500	2500000
200	8	1000	100	1.6 Mpa	800000	400000	± 2%	5500	4000000
250	10	1000	100	1.6 Mpa	1100000	550000	± 2%	9000	5500000
300	12	1000	100	1.6 Mpa	1500000	750000	± 2%	14000	7500000
350	14	10000	1000	1.6 Mpa	2000000	1000000	± 2%	20000	10000000
400	16	10000	1000	1.6 Mpa	3000000	1500000	± 2%	25000	15000000
450	18	10000	1000	1.6 Mpa	3000000	1500000	± 2%	25000	15000000
500	20	10000	1000	1.6 Mpa	5000000	2500000	± 2%	35000	25000000
600	24	10000	1000	1.6 Mpa	7000000	3000000	± 2%	45000	35000000
700	28	10000	1000	1.6 Mpa	7000000	3000000	± 2%	45000	35000000

Working Condition:

- Water Temperature 50°C
- Water Pressure ≤1MPa
- Pressure Loss <0.1 Pa
- Maximum Pressure-16 Bar

Dasmesh® WATER METER

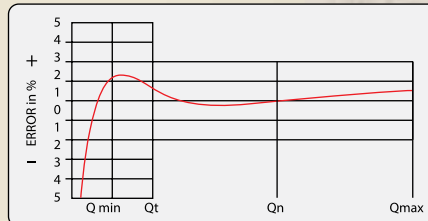
Head Loss Curve



Accuracy

- From minimum flow rate (Q_{min}) inclusive to transitional flow rate (Q_t), exclusive: $\pm 5\%$
- From transitional flow rate (Q_t) inclusive, to maximum flow rate, (Q_{max}), exclusive: $\pm 2\%$

Accuracy Curve



DIMENSIONS

Size of Meter		Outside Diameter of flanges	Dia of bolt circle	Thick ness of flanges	Holes Number	Holes Dia	Flange to Flange Distance + 5%
mm	inches						
40	1½	150	115	19	4	19	305mm
50	2	165	125	19	4	19	305mm
65	2½	180	150	21	4	19	410mm
80	3	200	160	21	4	19	410mm
100	4	220	180	22	8	19	442mm
150	6	285	240	23	8	23	500mm
200	8	340	295	24.5	8	23	575mm
250	10	395	350	26	12	23	625mm
300	12	445	400	27.5	16	23	670mm
350	14	505	460	29	16	23	710mm
400	16	565	513	30	20	28	737mm
450	18	615	565	31.5	20	28	737mm
500	20	670	620	33	20	28	765mm
600	24	780	725	36	20	31	835mm
700	28	895	840	38.5	24	31	850mm

S
P
A
R
E
P
A
R
T
S





Dasmesh[®]

ENGINEERING WORKS

35, EAST MOHAN NAGAR, AMRITSAR, PB-143006 INDIA

Mobile : +91-92160 05007

: +91-92162 20774

Phone : +91-183-2582617

: +91-183-2582618

email : dasmeshwatermeter@yahoo.com

: dasmeshamanpreet@gmail.com

www : www.dasmeshwatermeter.com

WE HAVE NO SISTER CONCERN